

Since 1970

# DAVID ROSE YACHTS

*Builders of Carrel & Carrel Sonata trailerable yachts.*

WITH COMPLIMENTS

14 CURRAWONG AVENUE PALM BEACH NSW 2108  
TEL: (02) 9974 4701 SYDNEY AUSTRALIA FAX: (02) 9974 5669  
ACN 000 809 370

REMOVING KEEL AND REFITTING FOR CAREEL 22

Remove Table and keel cover by removing screws under keel cover. Let keel down to rest on trailer tray and leave keel pump tap open. Remove ram by undoing clevis pin and rear bolt also disconnecting hydraulics. As per drawing fit 5/8" Booker rod with wooden block nut and washer. Take weight off keel pin. Remove keel pin (see drawing old or newer type) and lower keel onto trailer by unscrewing nut on booker rod. Lift yacht off trailer gently (see drawing) and fit keel holding timbers as per drawing, 2 sets for safety. Remove booker rod and fit good quality eye bolt for lifting keel with chain block. Mark keel position on trailer for refitting keel.

When lifting keel with chain block make sure everyone keeps clear.

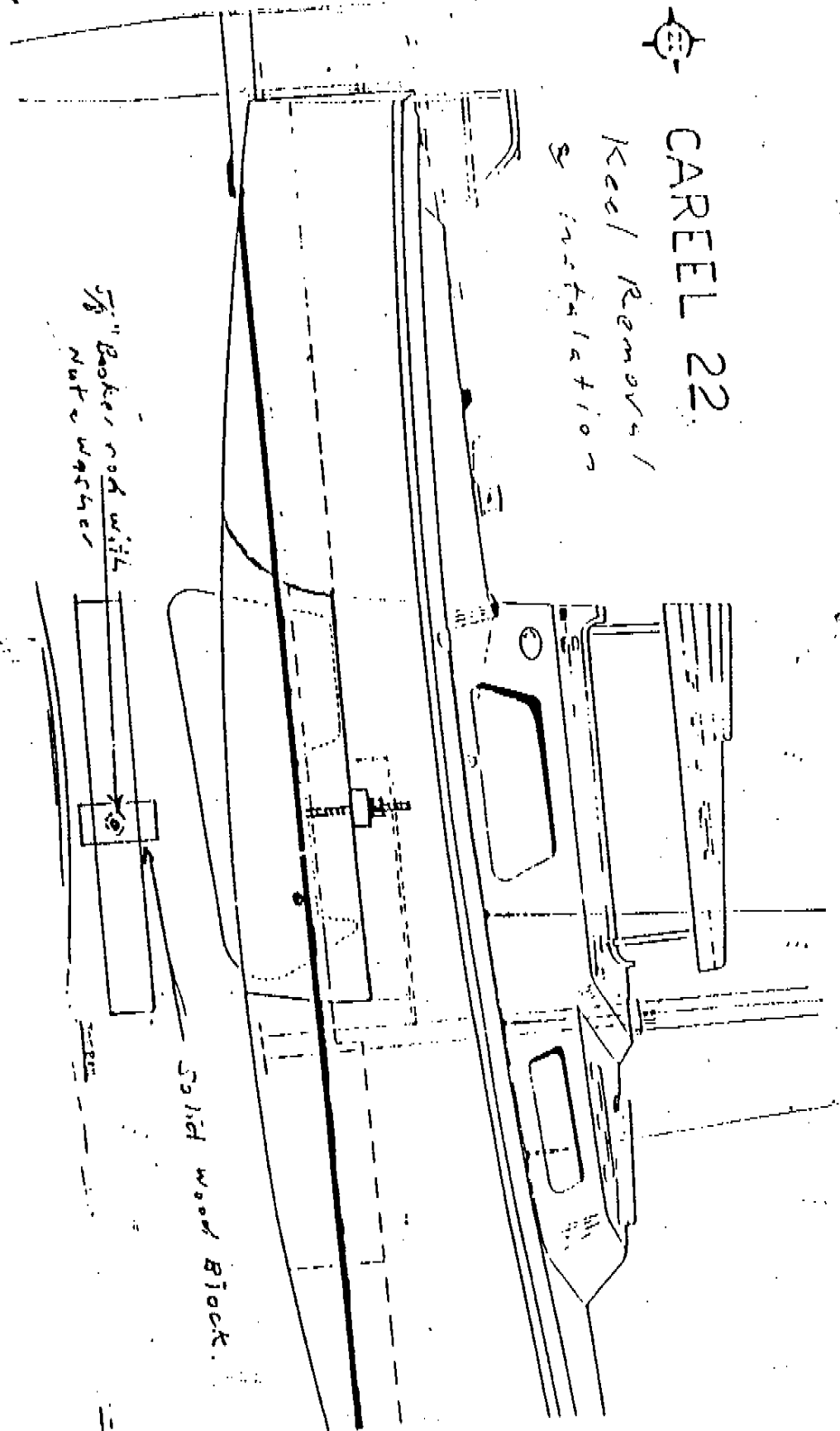
Hydraulic Oils - B.P. HLP 40 or  
SE 10 Enginge Oil.

To refit Keel do reverse of above.



# CAREEL 22

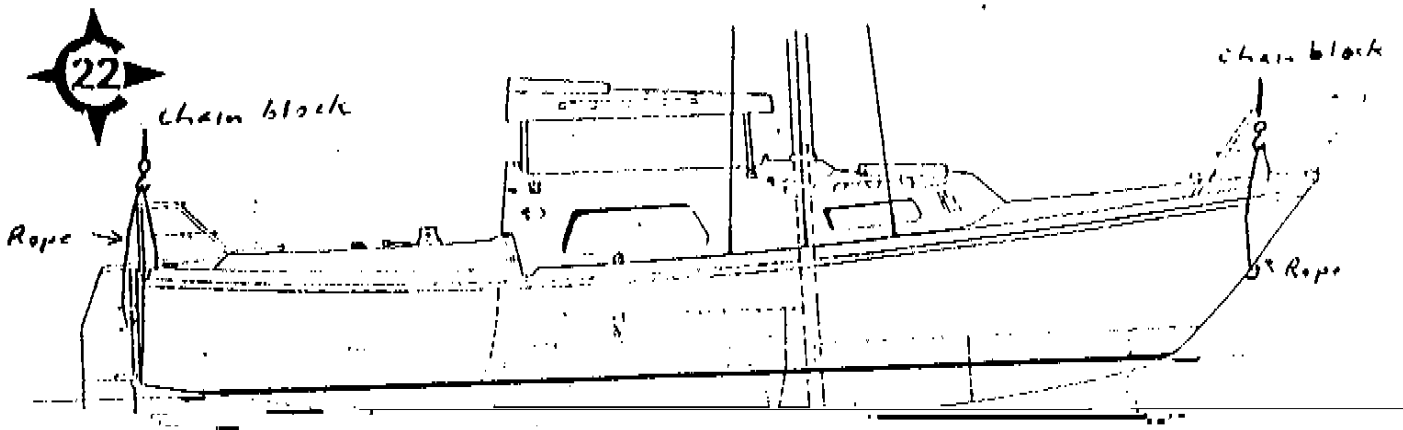
Keel Removal /  
Installation



3/8" Boiler rod with  
Nut & washer

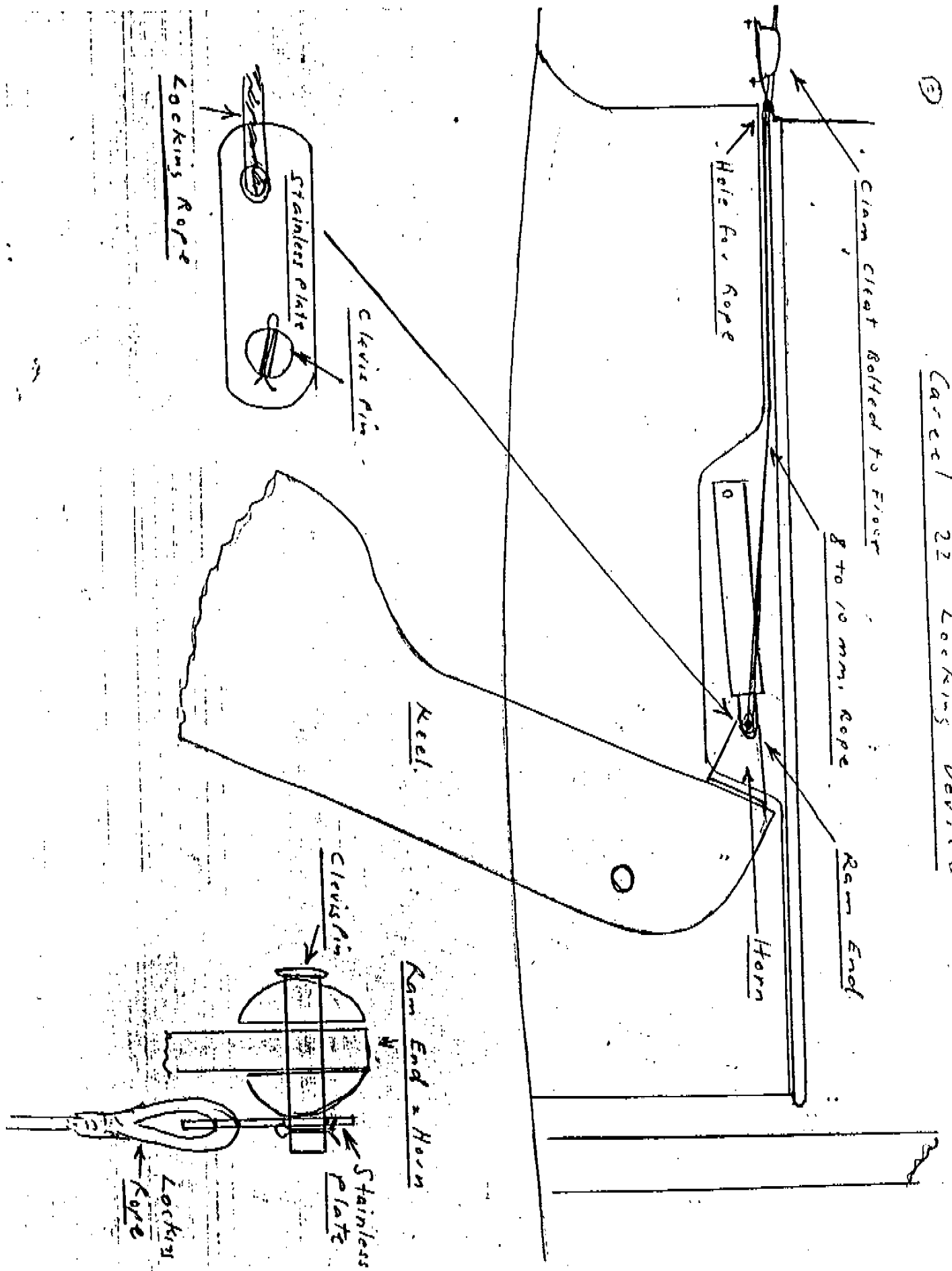
Solid wood Block.

3



(3)

Carrel 22 Locking Device



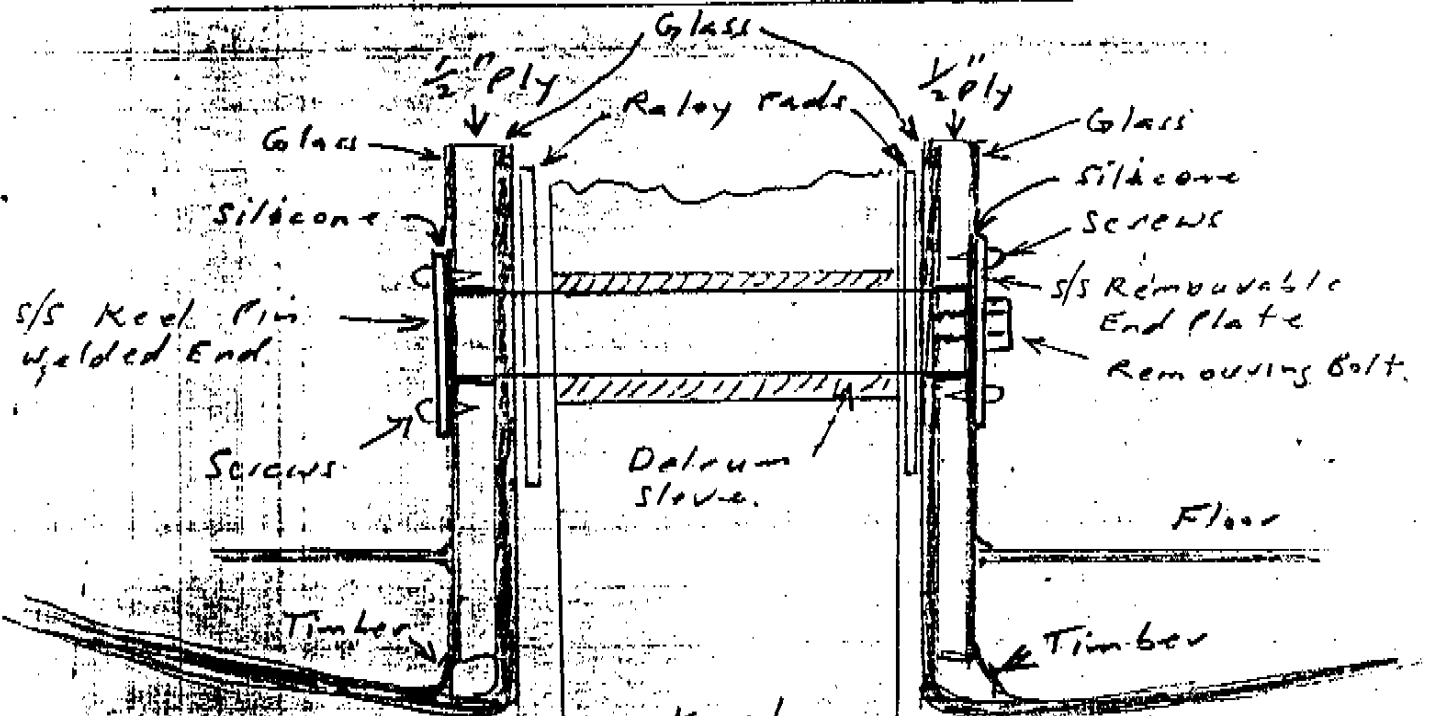
101 84.

RED PIN PIN CARREL 22.

1/2" PIN / Glass \ V"

Nov 81.

# OLD FIN PIN CAREEL 22.



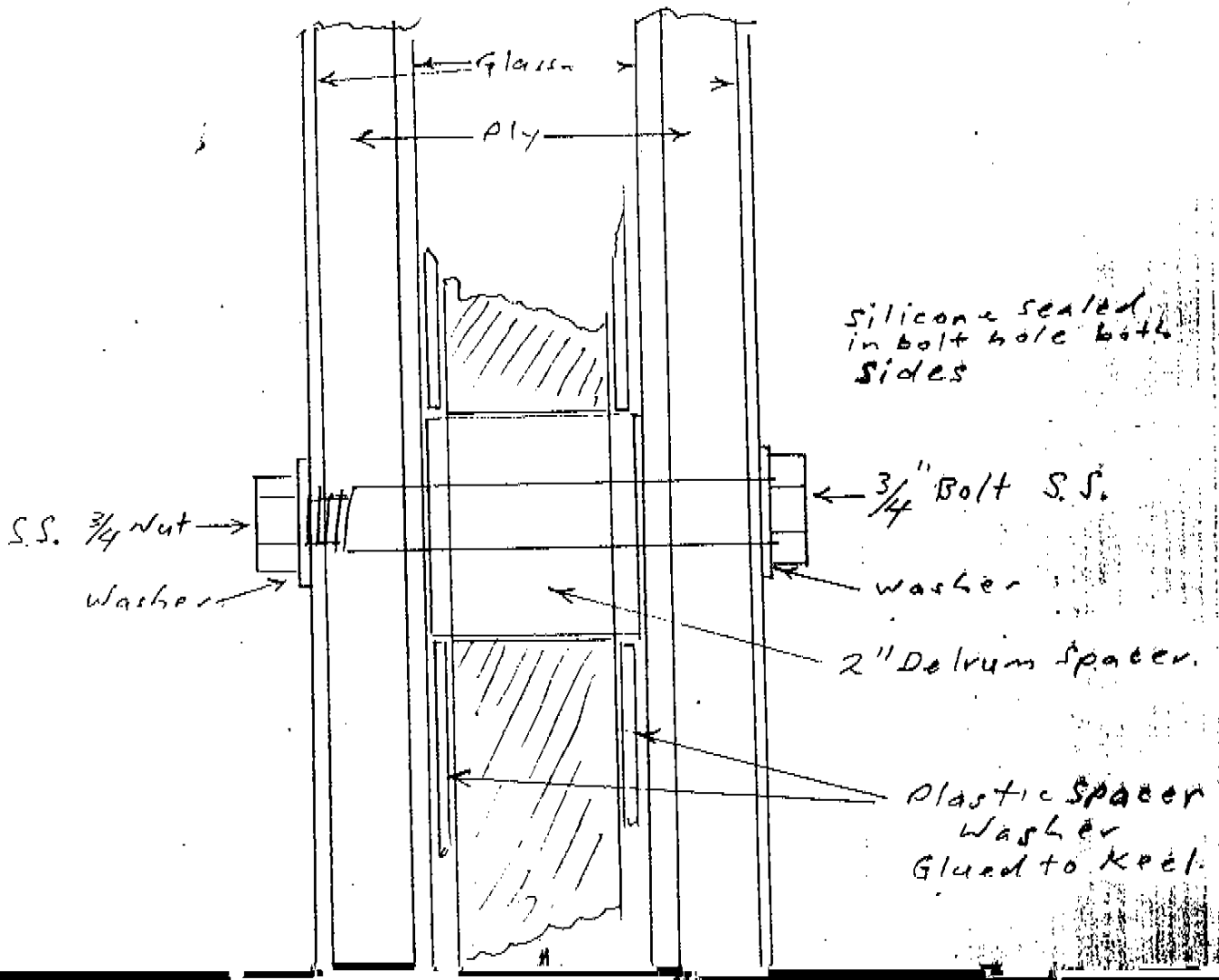
if silicone seal is broken water may penetrate 1/2 ply and end up under Floor

Keel.

To re seal remove end plate & tap pin out 1/4\" re silicone and re fit. Remove & re fit screws.

4-87

New 18 or 22 Keel Pin Details





# CARREEL 22

Remountable Fin Lever

Material M11A Steel

Finish Hot Dip Galvanis + W

Scale Full Size

GT ALDONS

11-6-73

